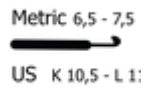
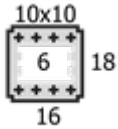


ROZENA

COMPOSIZIONE: 68% Lana Merino 16 microns, 17% Cashmere, 15% Nylon
GOMITOLO: e 25 grs. - 112 mts.



Perfetto per chi cerca calore, sofficità e morbidezza in un'unica soluzione, **Rozena** è un filato di alta qualità che offre un mix equilibrato di comfort e durabilità. La lana merino di 16 micron garantisce una grande delicatezza sulla pelle, mentre la percentuale di cashmere aggiunge una morbidezza avvolgente. Per esprimere al meglio le sue caratteristiche, va lavorato con molta morbidezza sui ferri.



COLORAZIONI DISPONIBILI



M2



M1



G2



G1



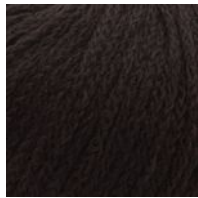
001



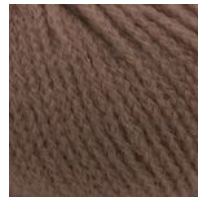
3000



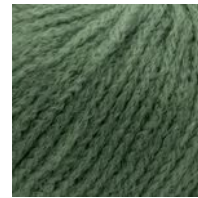
3010



3011



3012



3020



3021



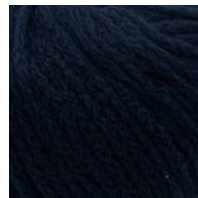
3022



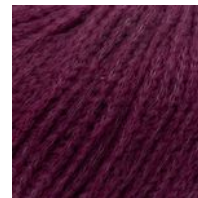
3031



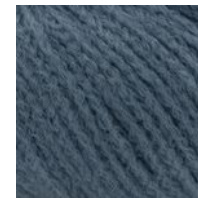
3042



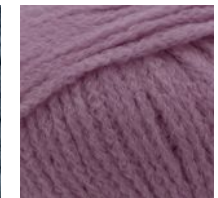
3050



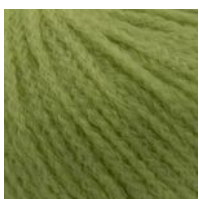
3051



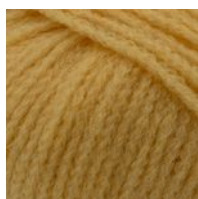
3052



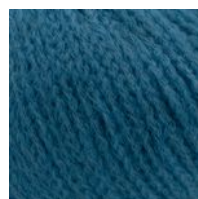
3100



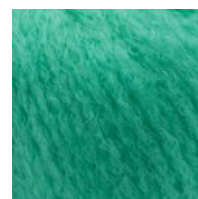
3102



3103



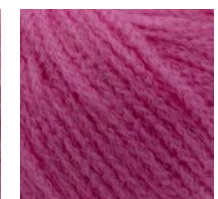
3200



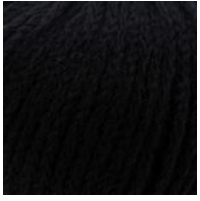
3201



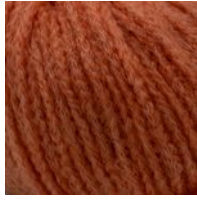
3203



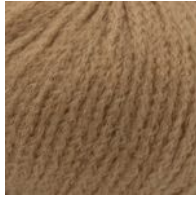
3204



3205

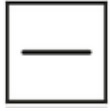


3206



3207

CURA DEL CAPO



ASCIUGATURA
SU SUPERFICIE
PIANA
(DISTESO)



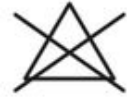
LAVAGGIO A
MANO - MAX
30°



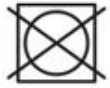
LAVAGGIO A
SECCO CON TUTTI
I SOLVENTI,
ESCLUSO IL
TRICLOROETILENE
O TRIELINA



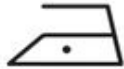
NO
MULESING



NON
CANDEGGIARE



NON
SOPPORTA
L'ASCIUGATURA
IN TAMBURO



STIRO BASSA
TEMPERATURA
(MAX 110°)