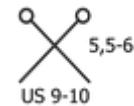
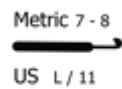
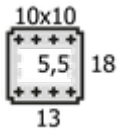


PIUMA CASHMERE

COMPOSIZIONE: 75% lana merino 16 microns, 16% cashmere, 9% nylon

GOMITOLO: e 25 gr. - 75 mt.



Unione esclusiva di cashmere e lana Merino 16 micron per un filato straordinariamente morbido e leggero. **Piuma Cashmere** è ideale per creazioni di lusso senza tempo, combina resistenza e delicatezza, offrendo capi eleganti e confortevoli con una qualità impareggiabile.



COLORAZIONI DISPONIBILI



G1



G2



M1



M2



GG



001



002



003



007



008



009



011



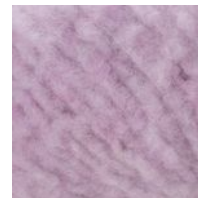
012



014



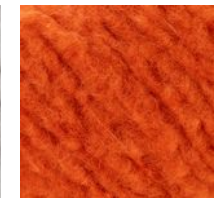
016



019



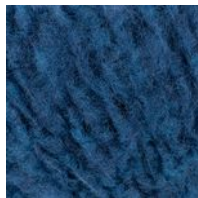
020



022



024



025



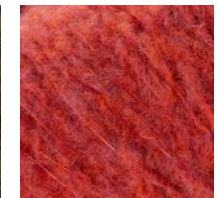
026



028

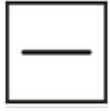


029



030

CURA DEL CAPO



ASCIUGATURA
SU SUPERFICIE
PIANA
(DISTESO)



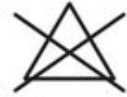
LAVAGGIO A
MANO - MAX
30°



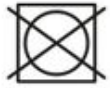
LAVAGGIO A
SECCO CON TUTTI
I SOLVENTI,
ESCLUSO IL
TRICLOROETILENE
O TRIELINA



NO
MULESING



NON
CANDEGGIARE



NON
SOPPORTA
L'ASCIUGATURA
IN TAMBURO



STIRO BASSA
TEMPERATURA
(MAX 110°)