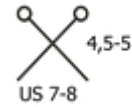
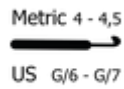
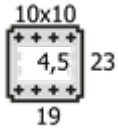


LUXURY SILK

COMPOSIZIONE: 100% seta

GOMITOLO: e 50 grs. - 135 mts.



Pregiata fettuccia in pura seta, **Luxury Silk** è un filato elastico, leggero e fresco, disponibile in colori pastello. Ideale per creare capi estivi e primaverili di grande eleganza, conferisce alla lavorazione un tocco originale e moderno, perfetto per punti traforati e maglie allungate.



COLORAZIONI DISPONIBILI



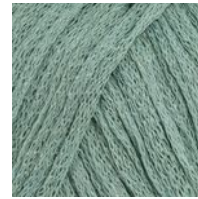
001



002



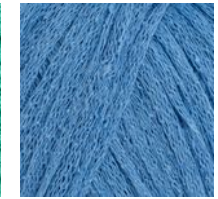
003



005



006



007



008



009



010



011



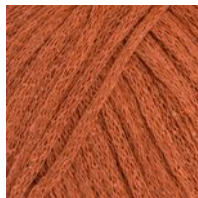
013



014



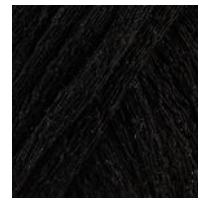
015



016



017



018



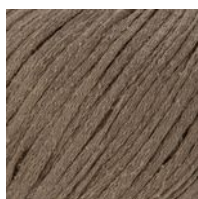
019



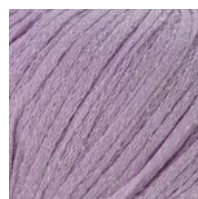
020



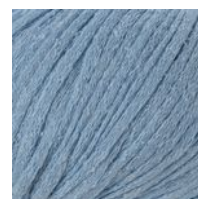
021



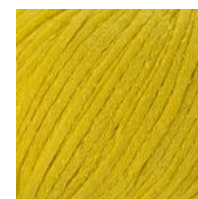
022



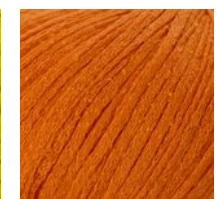
023



024



025



026



027



030

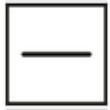


031



032

CURA DEL CAPO



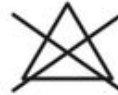
ASCIUGATURA
SU SUPERFICIE
PIANA
(DISTESO)



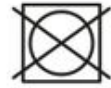
LAVAGGIO A
MANO



LAVAGGIO A
SECCO CON TUTTI
I SOLVENTI,
ESCLUSO IL
TRICLOROETILENE
O TRIELINA



NON
CANDEGGIARE



NON
SOPPORTA
L'ASCIUGATURA
IN TAMBURO



STIRO BASSA
TEMPERATURA
(MAX 110°)